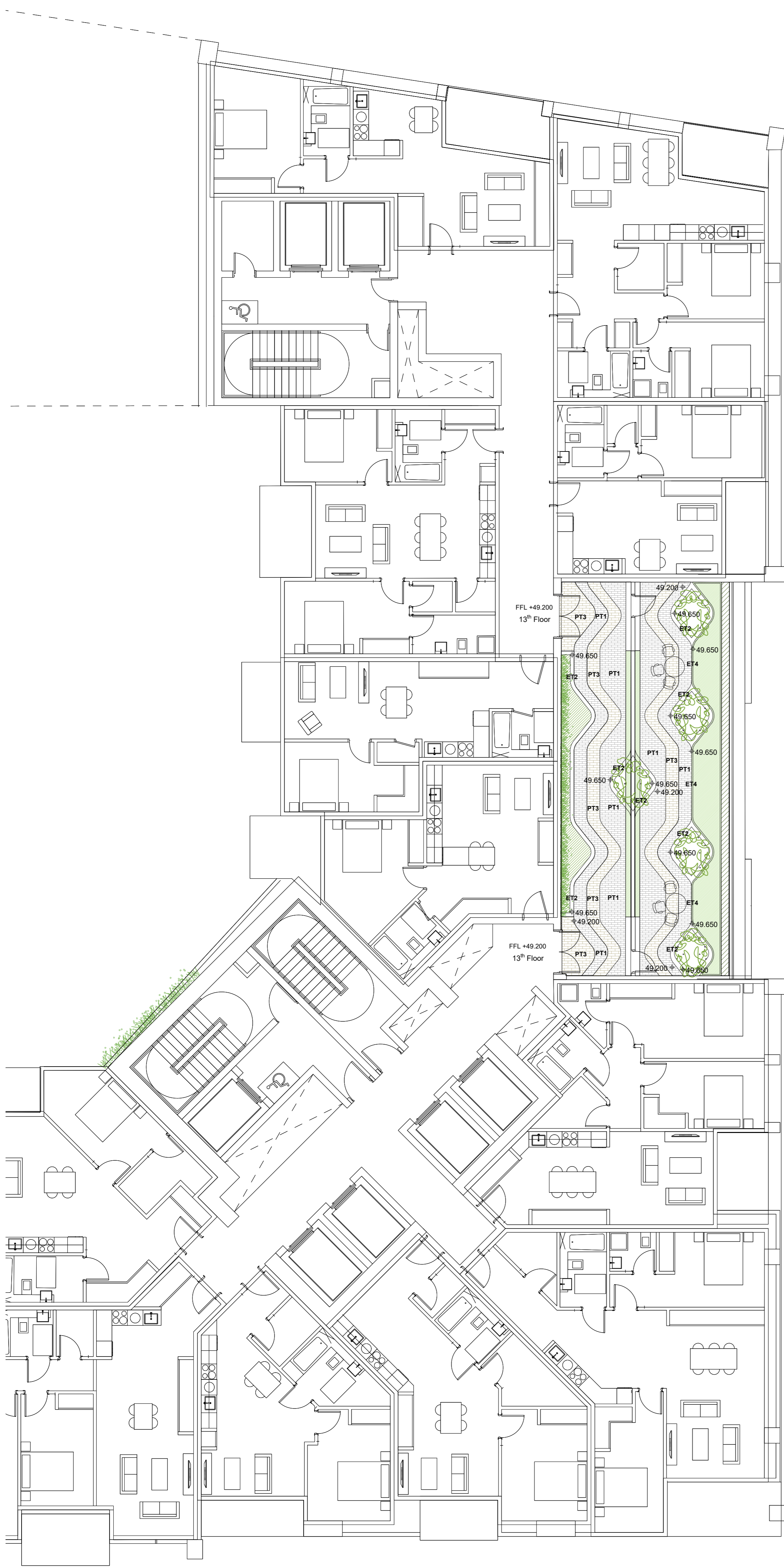


DISCLAIMER
 1. This drawing is the property of Cameo & Partners Ltd.
 2. It must not be copied or reproduced without written consent.
 3. Do not scale from this drawing.
 4. Check all dimensions on site before setting out.



- PROPOSED HARD LANDSCAPE**
- Paving Type 1:** Buff Coloured Granite Slabs
 Size: 100x200, 200x400, 400x600, depth 80mm.
 Colour: 3 shades of light buff
 Supplier: Stonepave or Similar Approved
 - Paving Type 3:** Buff Coloured Granite Sets
 Size: 100x200, depth 80mm.
 Colour: 3 shades of light buff
 Supplier: Stonepave or Similar Approved
 - Edge Type 2:** High Performance Concrete Edges and Walls
 Height: various. Colour: White with etched surface.
 Supplier: Cassidy Brothers or Similar Approved
 - Edge Type 4:** Metal Planter Edge
 Height/Colour: 500mm / To match architectural metalwork.
 Supplier: Kinley or Similar Approved
 - Furniture Type 7:** Bespoke Metal Trellis System
 Powder coated metal tubes with tension wires as a plant support for climber plants.
 Colour to match architectural metalwork.
 Supplier: TBC or Similar Approved
 - Furniture Type 10:**
 Table with chairs. Notional only.
 Client to confirm preferred product.
 - Insects hotel**
Stage beetle loggery
- PROPOSED SOFT LANDSCAPE**
- Proposed Shrub Planting**
 Product: Refer to Planting Schedule
 Supplier: Tully Nurseries or Similar Approved
 - Proposed Herbaceous Planting**
 Product: Refer to Planting Schedule
 Supplier: Tully Nurseries or Similar Approved
 - Proposed Green Wall**
 Supplier: ANS Global or Similar Approved
 - Proposed Wildflower Planting**
 Product: Refer to Planting Schedule
 Supplier: TBC or Similar Approved
 - Proposed Allotment Planting Area**
 Product: Refer to Planting Schedule
 Supplier: TBC or Similar Approved
- + 31.00 FFL Level existing /
 + 30.82 Level proposed
 + 31.000

PROPOSED HERBACEOUS PLANTING

PERENNIAL MIX D (Shaded location)

Scientific name	Common name	Size	Densities
Erythronium 'Pagoda'	Fawn lily	2L, CG	15/m ²
Euphorbia am. var. robbiae	Spurge	2L, CG	12/m ²
Dryopteris erythrosia	Copper shield fern	2L, CG	7/m ²
Helleborus x hybridus 'Harvington Apricot'	Stinking hellebore	2L, CG	7/m ²
Liriope muscari 'Monroe White'	Lily turf	2L, CG	12/m ²
Polystichum aculeatum	Hard shield fern	2L, CG	5/m ²

PERENNIAL MIX E (Shaded location)

Scientific name	Common name	Size	Densities
Hyacinthoides non-crispa	Blue bell	standard bulb	50/m ²
Carex 'Ice Dance'	Sedge	2L, CG	7/m ²
Astrantia major 'Claret'	Masterwort	2L, CG	9/m ²
Luzula nivea	Wood-rush	5L, CG	9/m ²
Liriope muscari	Lily turf	2L, CG	12/m ²
Pachisandra terminalis	Japanese spurge	2L, CG	12/m ²

PERENNIAL MIX F (Shaded location)

Scientific name	Common name	Size	Densities
Alchemilla mollis	Garden Lady's mantle	2L, CG	7/m ²
Polystichum polyblepharum	Japanese lace fern	2L, CG	7/m ²
Carex 'Ice Dance'	Sedge	2L, CG	7/m ²
Epimedium x warleyense 'Orangenkoenigin'	Barrenwort	2L, CG	15/m ²
Geranium macrorrhizum 'White Ness'	Bigroot Geranium	2L, CG	12/m ²
Liriope 'Monroe White'	Lily turf	2L, CG	12/m ²
Verbascum 'Petra'	Mullein	2L, CG	9/m ²

IMPORTANT NOTES:

All plant stock, plant handling and planting to be undertaken in accordance with the following British Standard Specifications and Code of Practice:
 BS 3936: 1992 Part 1 Nursery Stock. Specification for Trees and Shrubs. BS 3936: 1981 Part 10 Nursery Stock. Ground Cover Plants. BS 4428: 1989 Recommendations for general landscaping operations. BS 3936-9: 1998 Nursery Stock - Specification for bulbs, corms and tubers.
 The Code of Practice for Plant Handling 1985 (Horticultural Trades Association).
 Plants not covered by BS 3936 shall be healthy specimens of good shape and balanced branch structure with abundant fibrous roots. Plants are to show vigour of growth within the growing season prior to lifting.

Plant Stock

Plant stock to be supplied in accordance with the size and description specified on the plant schedule. Plant stock shall be healthy, vigorous, and free from pests and diseases and suitably hardened off for the proposed situation of planting, and lifted at a time in accordance with good nursery practice. Stock shall have a well formed fibrous root system and be free from perennial weeds. All bulbs to be sourced from approved suppliers and will be of good condition, firm, not dried and free of pests, disease and fungus.

Tree Planting

Trees of the same species shall be uniform in size, shape and in good condition.

Shrub and Herbaceous Perennial Planting

Shrubs and herbaceous plants of the same species shall be uniform in size, shape and in good condition.

Mulching

All soft landscape areas to be mulched with a 50 mm layer of ornamental 'TMA Bark Supplies' or similar grade bark mulch

